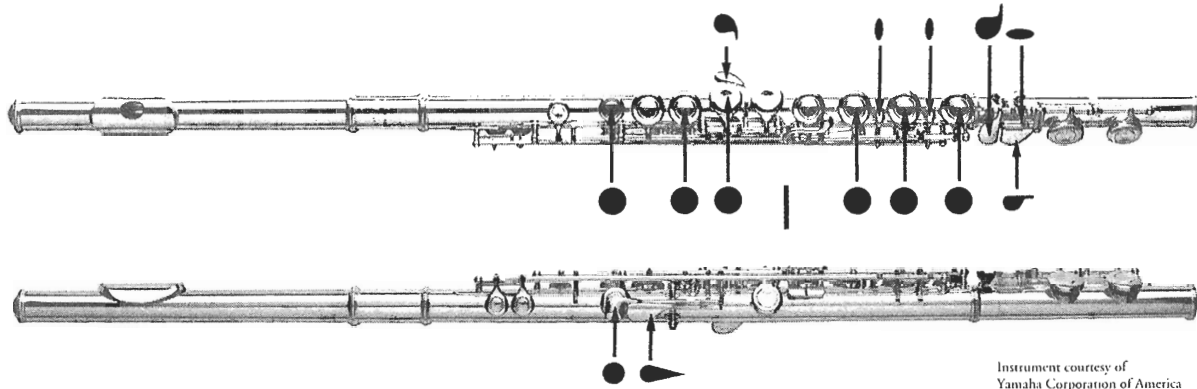


FLUTE FINGERING CHART



Instrument courtesy of
Yamaha Corporation of America
Band and Orchestral Division

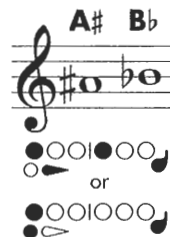
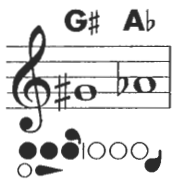
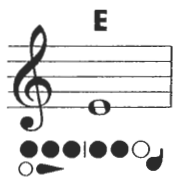
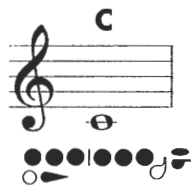


The most common fingering appears on top
when two fingerings are shown.

Take Special Care

Before putting your instrument back in its case after playing, do the following:

- Carefully shake the water out of the head joint.
- Put a clean soft cloth on the end of your cleaning rod.
- Draw the cleaning cloth and rod through the middle and foot joints.
- Carefully wipe the outside of each section to keep the finish clean.



C

C# D \flat

D

D# E \flat

E

F

F# G \flat

G

G# A \flat

A

A# B \flat

or

B

C

C# D \flat

D

D# E \flat

E

F

F# G \flat

G

G# A \flat

A

A# B \flat

B

C